



HOME FIRE!

SAFETY HERO!

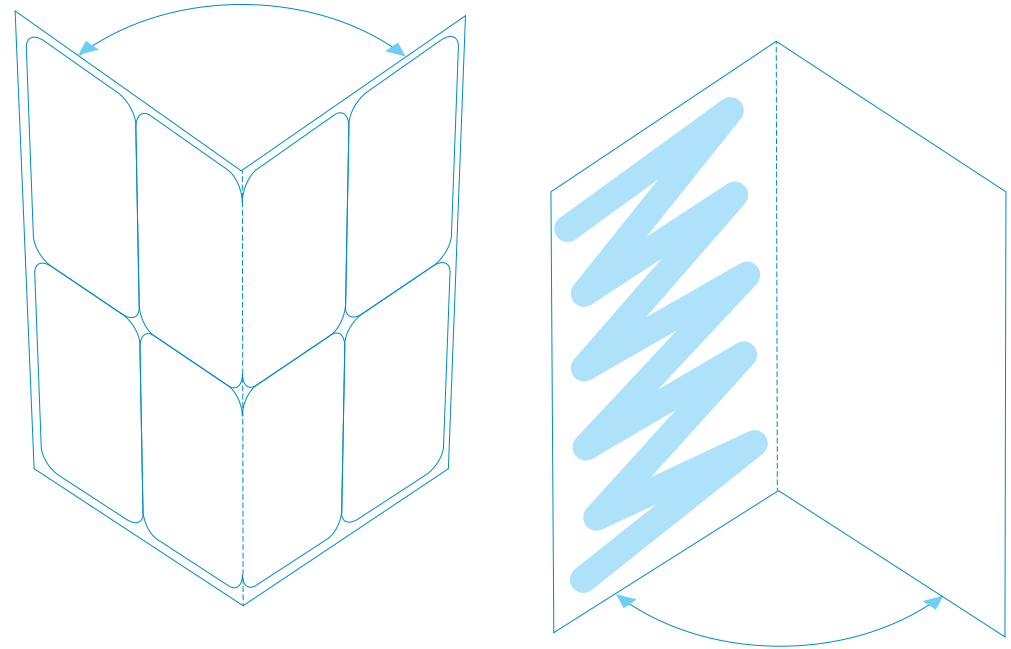


CARD GAME

1. PRINT ALL PAGES ONE SIDED



2. FOLD THE PAGE IN HALF VERTICALLY



3. GLUE ONE SIDE AND PRESS TOGETHER

4. AFTER GLUE HAS DRIED: CUT OUT CARDS





HOW TO PLAY

- Choose a 'Fire Warden' to read out loud the Fire Safety messages and keep score.
- Give each player a 1 x Fire Hazard and 1x Fire Safe card.
- Place the deck of cards face up on a table displaying the Fire Safety message and picture.
- Each player places either a Fire Safe or Fire Hazard card face down next to the Fire Safety message.
- Once all players have placed their card, the Fire Warden turns over all the cards to read out loud the answer.
- A player scores a point for a correct answer.
- Continue playing until all cards are revealed.

Print more copies of the LAST PAGE to add more players!!

[Each print will allow for two extra players]

AUGMENTED REALITY

If you have access to a Smartphone or Tablet, download the augmented reality version of Home Fire Safety Hero and see if you have what it takes to make your home fire safe. Follow the links from Brigade Kids website: <https://brigadekids.com/>



CLOTHES DRYER

The lint filter has been cleaned after use.



CLOTHES DRYER

A fluffy lint filter in clothes dryer.



FIRE HAZARD

Clean the lint filter after each use.



FIRE SAFE

Clean the lint filter after each use.



CHECK DOOR

Checking to see if the door is hot with back of hand before opening it.



CALL TRIPLE ZERO

This child has called Triple Zero (000) in an emergency.



FIRE SAFE

Use a phone to call Triple Zero (000). Speak clearly, answer all questions and stay on the phone.



FIRE SAFE

Hold the back of your hand up to the door. If the door is hot, there is a fire on the other side, and you need to take another escape route.



CANDLE

Unattended lit candle too close to a curtain.



CANDLE

This candle has been blown out because nobody is watching.



FIRE SAFE

Candles should never be lit if no one is watching.



FIRE HAZARD

The curtains can catch fire because the candles are too close to it. Tell an adult to move the candle or blow it out if not in the room.



CHILD IN CUPBOARD

This child is hiding in a cupboard during a fire.



CLOTHES ON FIRE

The child's clothes are on fire. He is doing STOP, DROP, COVER and ROLL.



FIRE SAFE

If your clothes catch on fire, remember to STOP, DROP, COVER and ROLL.



FIRE HAZARD

Never hide in a cupboard or under a bed if there is a fire, as firefighters will not be able to find you.



DOOR WAY

This door is clear of all obstacles.



DOOR WAY

This door way is blocked.



FIRE HAZARD

Never block an exit to a room in case you have to get out quickly.



FIRE SAFE

Never block an exit to a room in case you have to get out quickly.



FIRE PLACE

A lit fireplace that is not protected by a shield.



GET DOWN LOW AND GO GO GO

This child has gotten down under the smoke and is leaving the house quickly.



FIRE SAFE

Get down low and GO, GO, GO where the air is cooler and easier to breathe. GET OUT AND STAY OUT.



FIRE HAZARD

A lit fireplace must always have a fire grate. Never touch a burning log. Tell an adult.



CLOTHING ON HEATER

Clothing left on top of an electric heater.



HEATER

This heater is clear from all objects and materials that could catch fire.



FIRE SAFE

Always keep yourself and objects a metre from the heater.



FIRE HAZARD

Clothing or material left on a heater is a fire hazard. Tell an adult to remove clothing from the heater. Always keep yourself and objects a **metre from the heater.**



HOME FIRE ESCAPE PLAN

This home has a Fire Escape Plan that everyone can see.



SAUCEPAN

The adult kept looking when cooking.



FIRE SAFE

Always keep looking when cooking.



FIRE SAFE

All homes should have a Fire Escape Plan that is easy to see. Everyone should practice the escape plan regularly.



KEYS

Keys are in or near the door so you can escape quickly.



SAFE MEETING AREA

In an emergency these children have met at their safe meeting place outside their house.



FIRE SAFE

Agree on a safe meeting place outside the home. Remember to GET OUT AND STAY OUT.



FIRE SAFE

During a fire you must be able to exit quickly, always place keys in door or near exit.



MATCHES

A box of matches lying on the floor.



MATCHES

These matches are safely locked away out of reach.



FIRE SAFE

Matches should always be locked away out of reach from children.



FIRE HAZARD

Matches should never be left lying around. Tell an adult to lock away the matches.



MOBILE DEVICE

A phone or tablet plugged in, charging on a bed.



MOBILE DEVICE

A phone or tablet plugged in, charging on a hard surface.



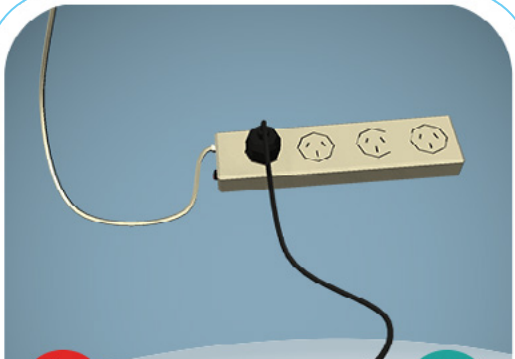
FIRE SAFE

Devices should be charged on a hard surface.



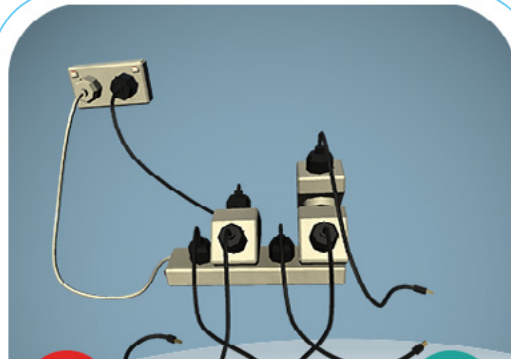
FIRE HAZARD

The bed can catch on fire because the mobile phone can get very hot when charging. Move the mobile to a hard surface to make it safe.



POWER BOARD

The power board is not overloaded.



POWER BOARD

Overloaded power boards or power outlets.



FIRE HAZARD

Never overload a power board. Tell an adult to switch off the power board and only use one plug per socket.



FIRE SAFE

Never overload power boards.



SMOKE ALARM

Test that your smoke alarm is working.



SMOKE ALARM

This smoke alarm has a flashing light and beeping sound, but there is no smoke or fire.



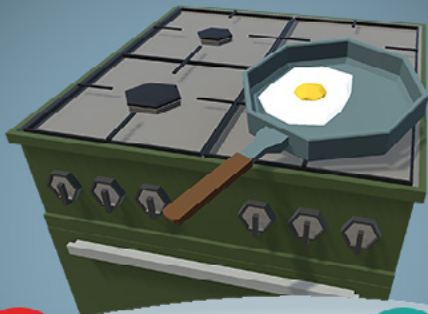
FIRE HAZARD

Test your smoke alarm once a month. If your alarm isn't working it is time to replace it.



FIRE SAFE

Working smoke alarms help save lives.



PAN HANDLE

Frypan handle facing outwards.



PAN HANDLE

Frypan handle is facing to the side.



FIRE SAFE

Always have your frypan handle facing to the side to keep children safe from hot foods causing burns.



FIRE HAZARD

Always have your frypan handle facing to the side to keep children safe from hot foods causing burns.



HomeFiRE!
SAFETY HERO ★



HomeFiRE!
SAFETY HERO ★



HomeFiRE!
SAFETY HERO ★



HomeFiRE!
SAFETY HERO ★

